



renaissance



Roman Mews, Thatcham

THE LOCALITY

Thatcham is an historic small market town situated close to the River Kennet and the Kennet & Avon Canal. The Town lies on the A4 with direct road, rail and bus links to Reading, Newbury, Swindon and London. The M4 motorway and A34 north/south trunk road are a few minutes away by car.

Close to a number of large employers, including Vodafone, Thatcham and Newbury have an array of amenities for all age groups including a mix of high street shops and a good local choice of leisure and entertainment facilities including a variety of restaurants and pubs. There is an excellent range of educational facilities including Futher Education establishments available in Newbury and Reading.

Within easy reach of Roman Mews there are numerous amenities, including:

- Henwick Worthy Playing Fields has a range of sport and recreation facilities
- Thatcham Nature Discovery Centre
- Bucklebury Common, a vast wooded area with many walks and cycle trails
- Three Health and Fitness centres
- Kennet centre sports complex and swimming pool
- Famous castles at Donnington and Highclere
- A variety of golf courses
- Watermill Theatre
- Newbury Racecourse
- Newbury Rugby and Football Club, National Division 1.



THE DEVELOPMENT

Roman Mews is a select development of one and two bedroom apartments and three/four bedroom town houses that have been carefully designed to appeal equally to professionals, first time buyers and investors.

The accommodation is presented in buildings of traditional design that incorporates the best modern construction methods and a contemporary internal layout. These dwellings have been designed to be ecologically sound, boasting a good use of sustainable materials and a highly efficient, eco-friendly ventilation and heat recovery system.

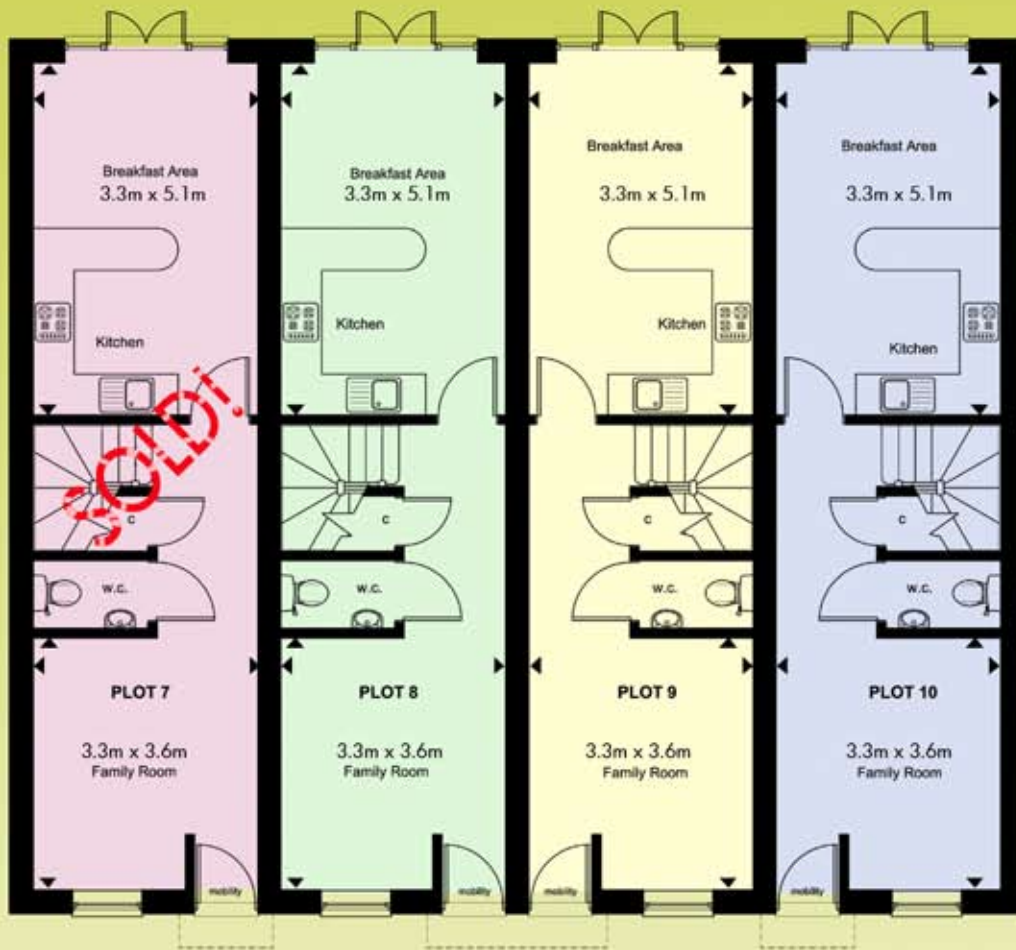
The development has also been built with quality and affordability in mind. It is hardly surprising that it has been in great demand as buyers have sought, in these difficult times, to ensure they buy into the best value proposition they can find.

If this is not enough, then just consider some of the special bonus items you will receive by purchasing via renaissance.

- Designer Kitchen including all whitegoods
- Luxury Bathrooms
- Fitted Carpets all included
- Central Heat Recovery System (Cuts down on heating bills)
- Under Floor Heating (also helps with heating bills)
- Central Sky TV
- Private rear garden with turf (to houses)
- Allocated Parking



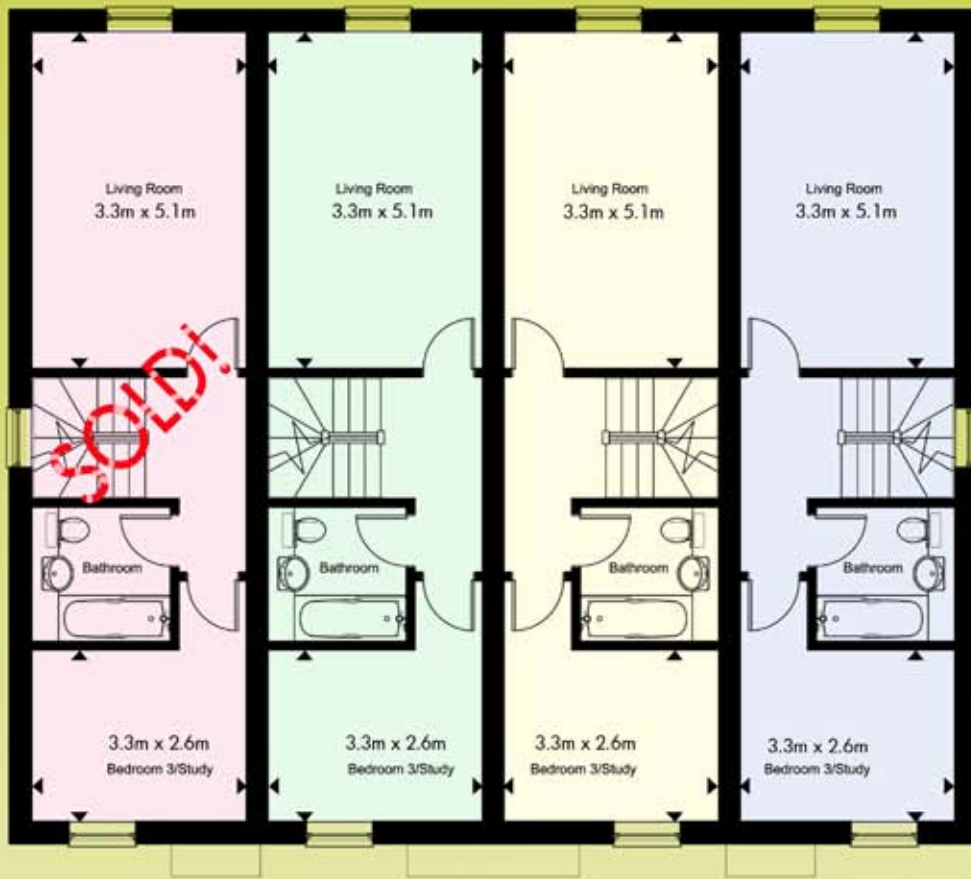
FLOOR PLANS - TOWNHOUSES



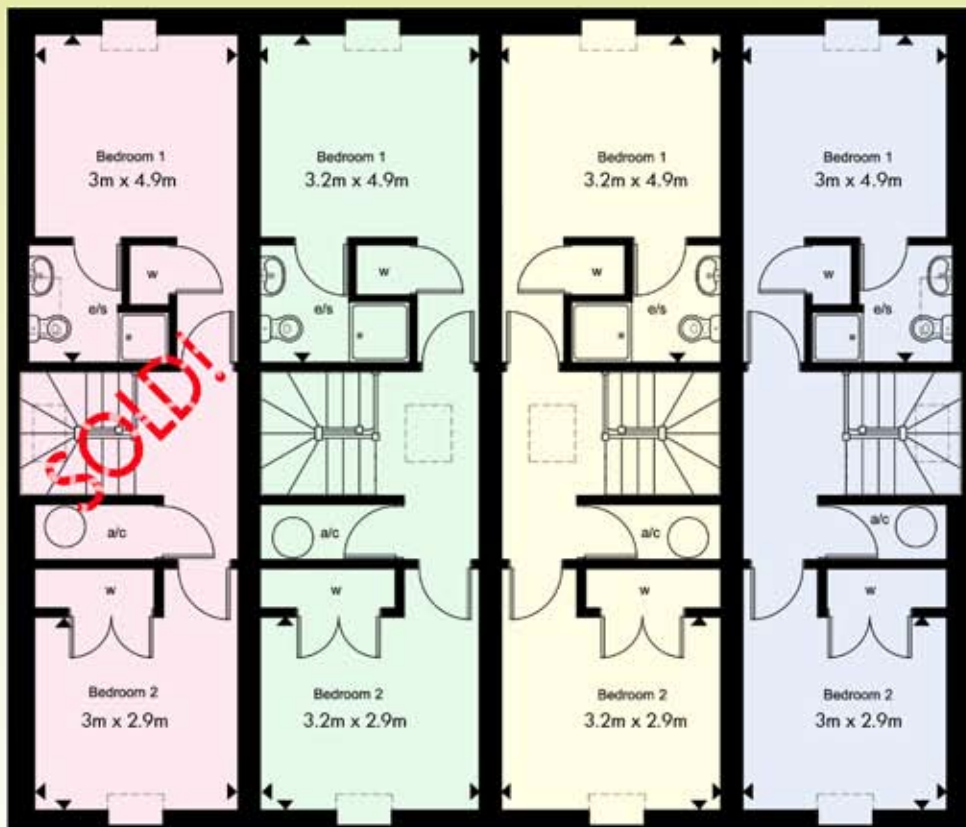
Ground Floor



FLOOR PLANS - TOWNHOUSES

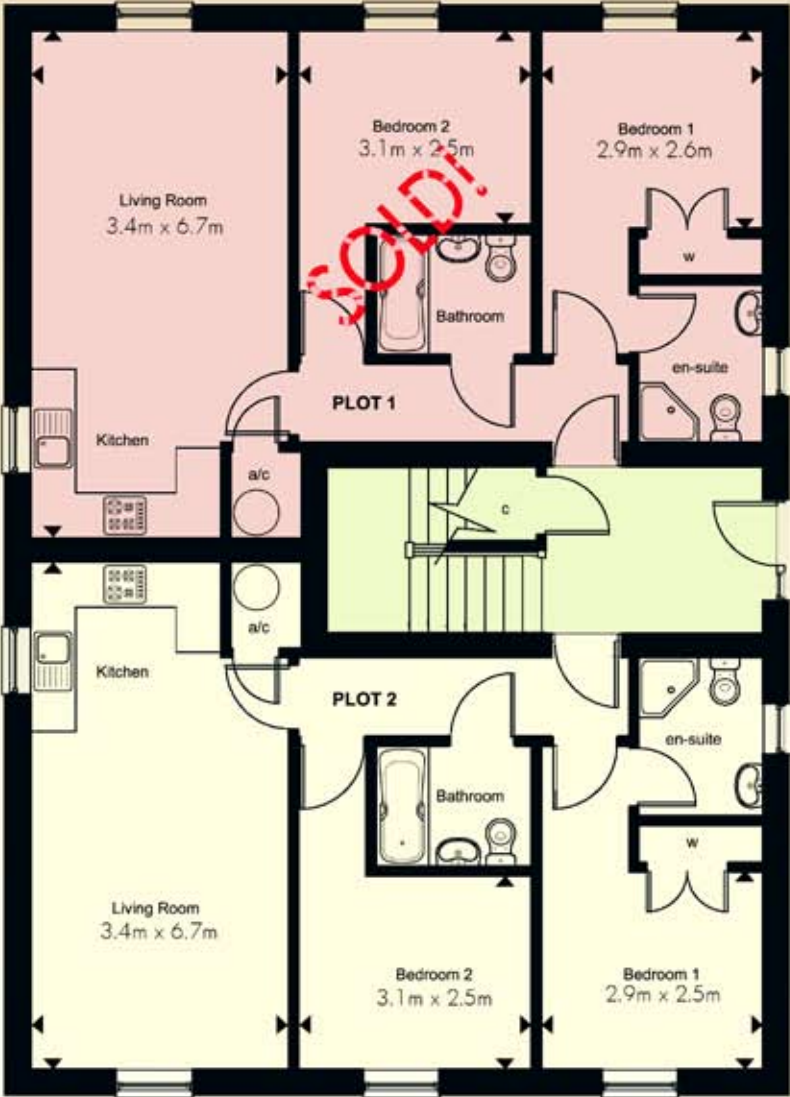


First Floor



Second Floor

FLOOR PLANS - APARTMENTS

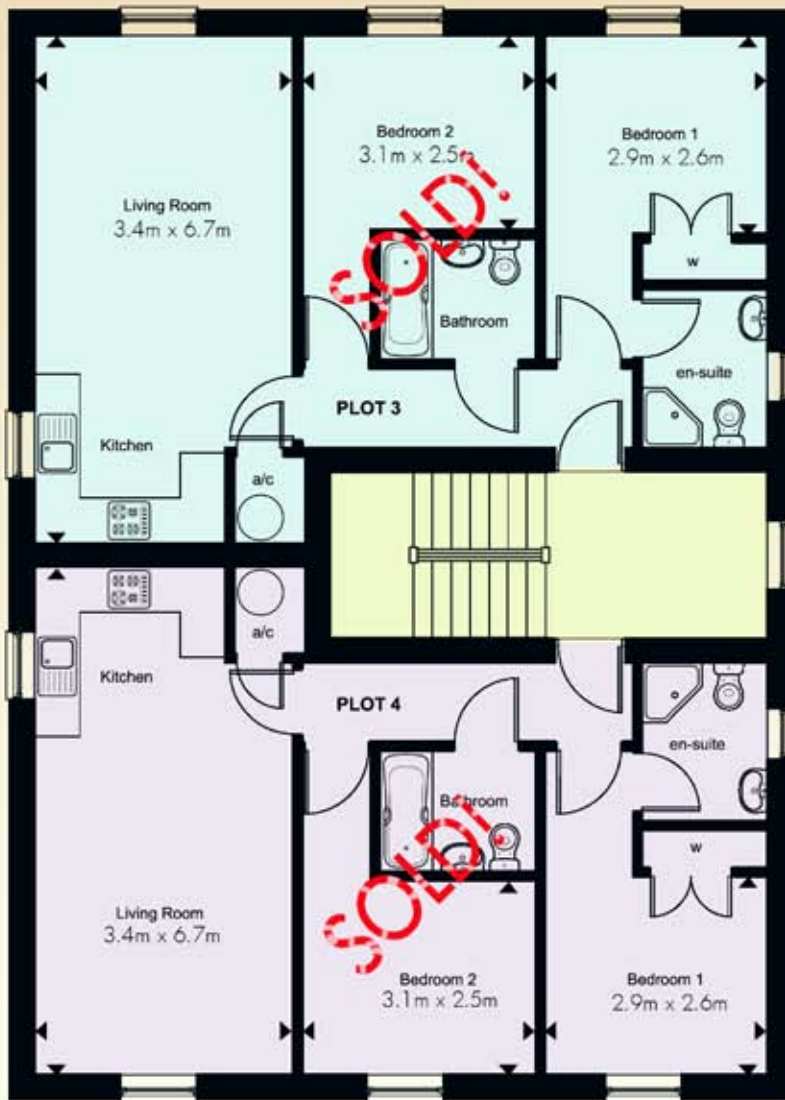


Unit 1 - Ground floor 2 bed 2 bath

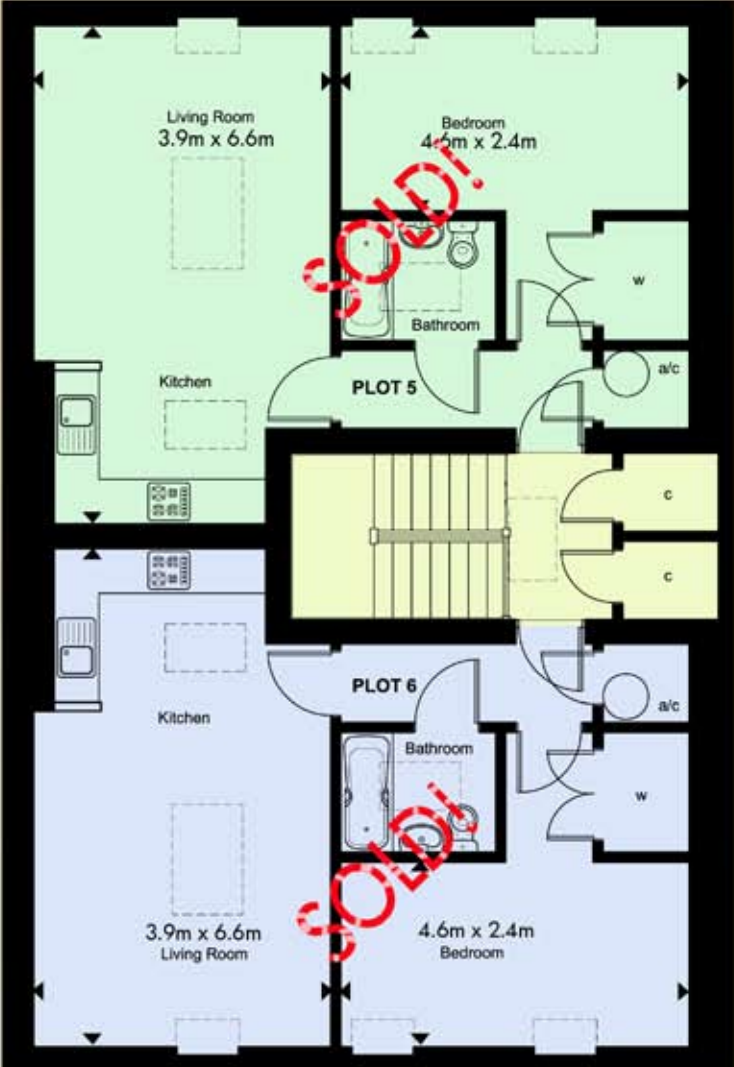
Unit 2 - Ground floor 2 bed 2 bath. Available again at £160k!



FLOOR PLANS - APARTMENTS



FLOOR PLANS - APARTMENTS

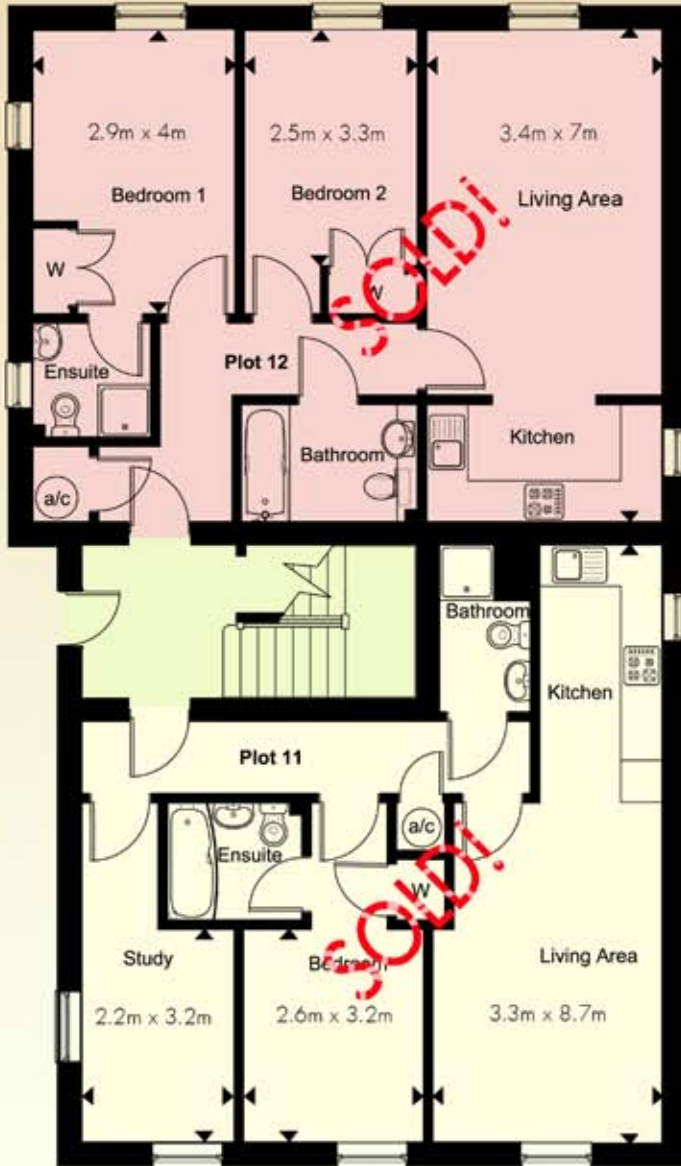


Unit 5 - Top floor large 1 bed

Unit 6 - Top floor large 1 bed



FLOOR PLANS - APARTMENTS

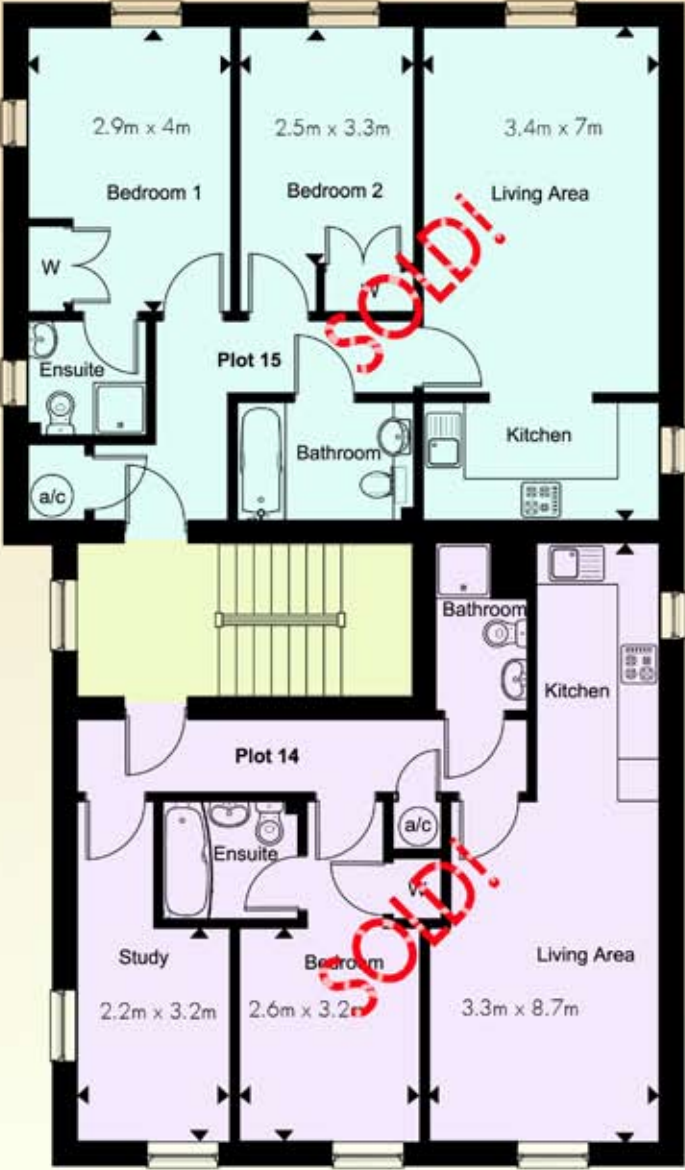


Unit 12 - Ground floor
two bed two bath

Unit 11 - Ground floor
two bed two bath



FLOOR PLANS - APARTMENTS

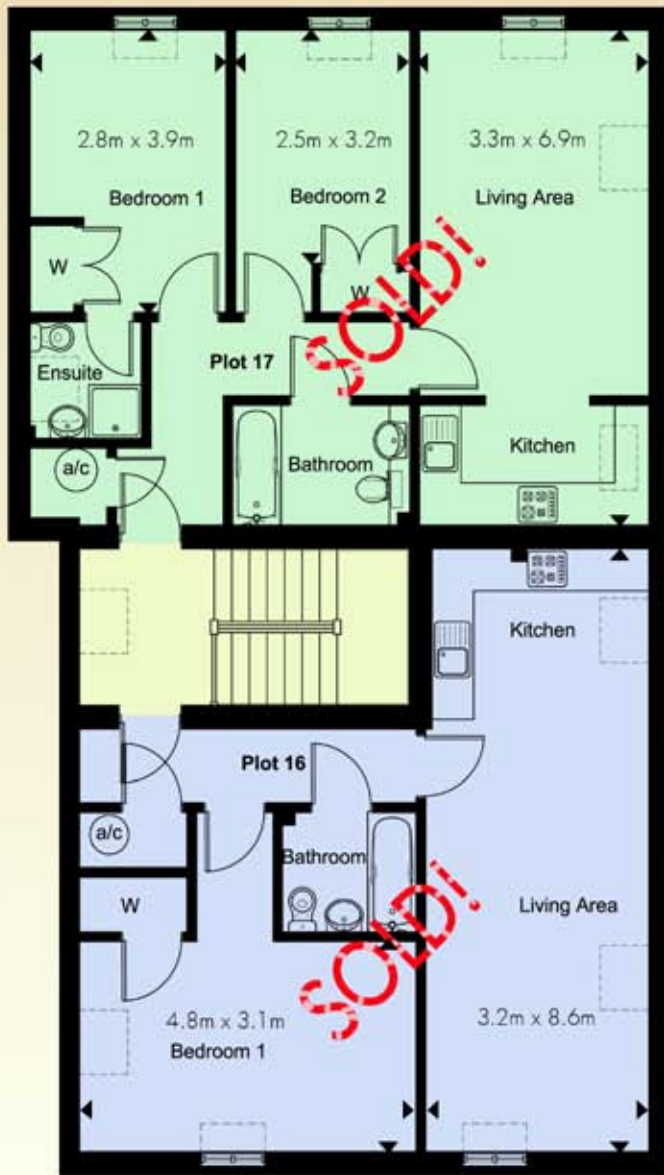


Unit 15 - First floor two bed two bath

Unit 14 - First floor two bed two bath



FLOOR PLANS - APARTMENTS



Unit 17 - Top floor 2 bed
2 bath

Unit 16 - Top floor large
1 bed



FUNDING YOUR PURCHASE

Obtaining a mortgage on a new home can be quite a challenge in the current economic climate. Typically, lenders are funding less as a percentage of the value of the home and expecting the purchaser to make up the difference. In addition to this, your precious cash is being committed to stamp duty, to legal fees, to moving costs, white-goods, carpets and so on. Its not surprising that in the context of this, less and less people are able to afford their first home.

Our response to this is *easyhome*.

easyhome is a package of measures that make home purchase less stressful and less financially demanding. The highlights are as follows.*

- Stamp duty assistance
- Legal assistance
- Deposit paid
- Funding applications managed by our own in house team
- Equity assistance (when available)
- Monthly Mortgage assistance
- Part exchange
- Market guarantee

See the [www.*easyhome*.org.uk](http://www.easyhome.org.uk) for more information.

* Not available in all cases. Terms and conditions and eligibility apply.



HOW TO FIND US

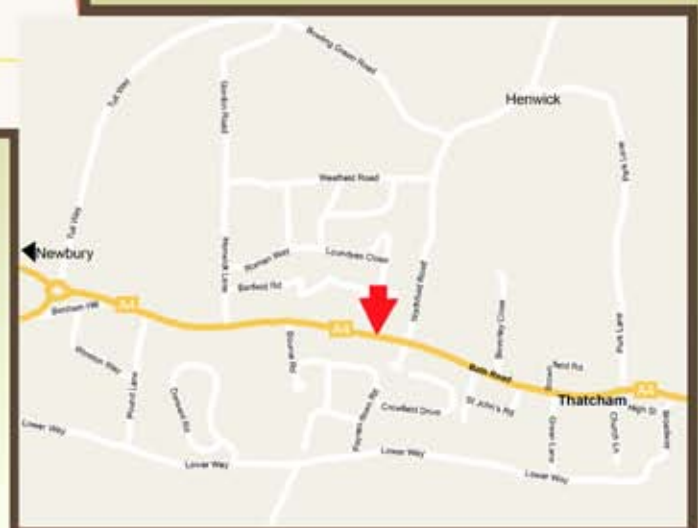


DIRECTIONS

Roman Mews is located on Bath Road to the west of Thatcham.

From Newbury, the South or North: Follow the A339 to the Robin Hood roundabout and turn east along the A4 towards Thatcham and Reading. After approximately three miles turn right at the roundabout after Newbury hospital to continue on the A4 (with Henwick Worthy Playing Fields on the left). Roman Mews can be found on the left approximately 1/2 mile after the playing fields.

Our new show house opened on the 3rd of October. It is open Friday and Saturday 10am - 4pm and otherwise by arrangement.





01635 521 133

email - info@renaissanceuk.net

Renaissance Habitat Ltd, 116 Bartholomew St, Newbury, RG14 5DT